

IssueNet Central Deployment for IssueNet Workspace

Document ID: Q000067

Last Revised On: January 23, 2008

This article applies to the following:

Product Version: IssueNet 4.7 and later

Component(s): Workspace

Solutions(s): All

Introduction

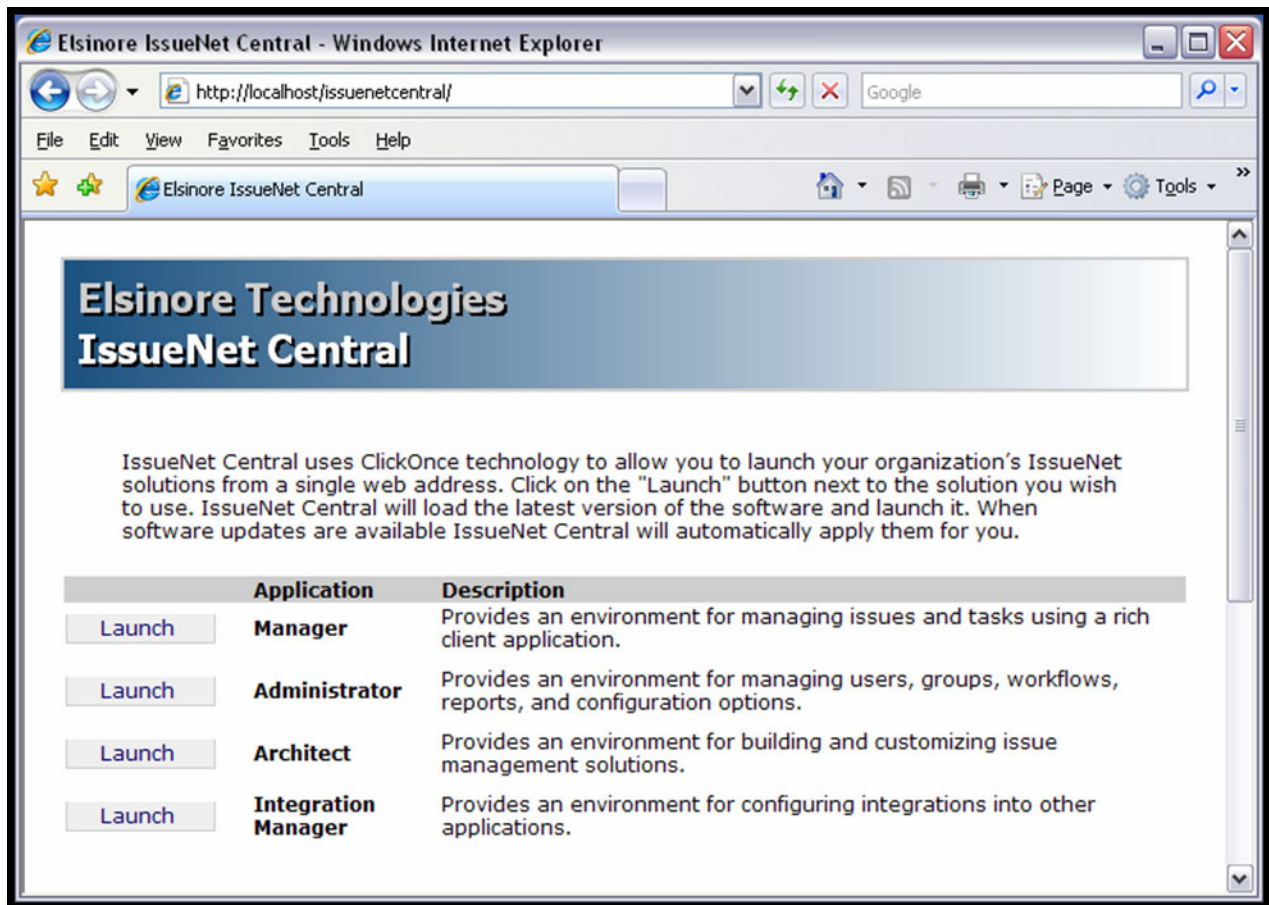
A great feature of the IssueNet platform is the ability to launch rich client tools from the IssueNet Central web site. Users gain all the advantages of a rich client interface without the deployment hassles of a traditional desktop installation. Prior to IssueNet 4.7, IssueNet Central deployment was available for every IssueNet product except one - IssueNet Workspace.

If you not familiar with Workspace, it is a series of integrations which allows users to access IssueNet from within Microsoft Outlook, Visual Studio, and MS Project. In addition to providing simple, always on access to the issue management system, these integrations provide host specific features. In Outlook, issues can be created from e-mail items, and in MS Project issues and tasks can be synchronized and imported between IssueNet and the project plan. To learn more about Workspace, take a look at the video of the Visual Studio Integration on the [video tutorials page](#) or review the details in the [IssueNet integrations page](#).

In IssueNet 4.6, and previous versions, Workspace required that each client run an installation package. The Click-Once deployment technology used by IssueNet Central did not support the deployment of add-in integrations to other products. However, as more organizations became interested in deploying the integrations as their user's primary issue management interface, Elsinore engineers re-focused their efforts on making Workspace easier to deploy. The result of that effort is the ability to launch IssueNet Workspace from IssueNet Central.

Instructions for Deployment

After you install IssueNet 4.7 or later, you will see an entry on the IssueNet Central page - the **Integration Manager**.



Clicking on the Launch button will download the integration components and launch the Integration Manager to allow you to enable the integration for each product Workspace supports.



Once you have selected products you want to use with Workspace and clicked the **Done** button, Workspace will load each time a host product such as Outlook is launched. There is no need to launch the Integration Manager again unless you want to change your integration options. To disable an integration, launch the Integration Manager from IssueNet Central, and clear the box next to the host product.

Conclusion

With IssueNet Central deployment for Workspace, users can use seamless integration to Outlook, Visual Studio, and Project with the same ease of access as browser based tools. In addition to making the initial deployment simple, IssueNet Central also automatically deploys software updates each time you install an upgrade of the IssueNet Platform.